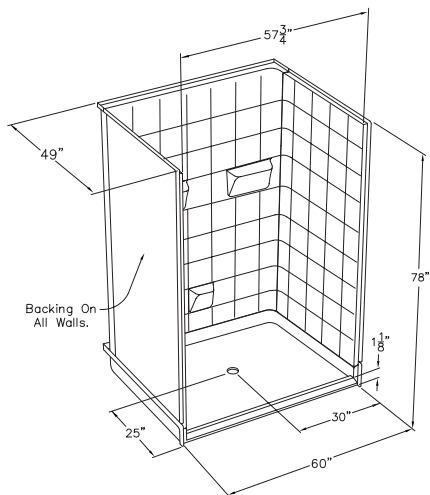


# Barrier Free, Roll In Shower 60" x 48"

## Ella Deluxe - Center Drain



### Model #

6048 BF 5P 1.125C-WH DLX  
6048 BF 5P 1.125C-BN DLX  
6048 BF 5P 1.125C-B DLX


**Ella Deluxe Accessories** (page 2)

**hangrohe**

German Engineering

**PONTE GIULIO®**  
creating solutions

Italian Design

Outside Dimensions: 60" W x 49" L x 78" H  
Shipping Dimensions: 60" W x 48" L x 72" H  
Shipping Weight: 505 lbs.  
Net Weight: 492 lbs.  
Threshold Height: 1.125" Change of Level 

### Package Options:

- White (W), Bone (BN) or Biscuit (B) Shower Panels
- Standard, Plus 24, Plus 36, Freedom, Deluxe, or Elite (premium fixtures in white, brilliant or satin)
- Flange Trim Molding Kit
- Multi-Piece Window Trim Kit
- Flat Wall Option: no soap ledges

### Panels:

Shower Base ..... 49" W x 60" L x 3.5" H  
Side Wall Panel Left ..... 49" W x 78" H  
Side Wall Panel Right..... 49" W x 78" H  
Rear Wall Panel Top..... 60" L x 34" H  
Rear Wall Panel Bottom ..... 60" L x 44" H

### Features:

- Premium marine grade gel-coat, five piece shower with 8" classic tile pattern
- Wood and steel reinforced walls for placing grab bars and seats anywhere (not dependent on stud locations)
- Easy shower wall assembly pin-lock system allowing front side installation
- Precision fit wall panel seams (match into grout pattern)
- Grip-Sure™ floor texture
- Self supporting, pre-leveled shower base (no mudset required)
- Shower door friendly (squared corners allow door installation)
- Ships pre-assembled, heavy duty crating protects product in transit

### Accessories:

- [5] Three (3) Straight Fine Brushed Stainless Steel Grab Bars (Two (2) 36" and One (1) 18")
- [9] 24" x 16" Four-Legged Foldup Seat, 500 lb. cap
- [11] Fine Brushed Finish Stainless Steel Curtain Rod
- [12] Collapsible Rubber Dam White with End Caps
- [13] 2" Chrome Strainer, Brass Drain with Friction Seal
- [14] 66" x 74" Heavy Weighted Shower Curtain

### Hangrohe:

- [1] Hand Shower, Chroma E75 3 Jet
- [2] Vinyl Techniflex Hose
- [3] Wall Outlet Elbow in Chrome
- [4] Hand Shower Alternate Wall Mount in Chrome
- [7] HG Focus E Pressure Balance Valve
- [8] Interchangeable iBox Universal Plus

### Ponte Giulio:

- [6] Ergonomic Hand Shower Holder ABS Chrome
- [10] Rectangular Stainless Steel Soap-Sponge Basket

### Codes:

IPC, UPC, ANSI Z 124.2, NAHB, HUD, FHA

### Warranty:

30 Year Limited Lifetime Warranty (on shower panels)\*

\*For more information please visit [www.ellasbubbles.com](http://www.ellasbubbles.com)

 Change of Level threshold has manageable 1/4" vertical rise to easily coordinate with minimum finished flooring.

# Barrier Free, Roll In Shower 60" x 48"

## Ella Deluxe Accessories

1.



Chroma E75  
Hand Shower - 3 Jet

2.



Vinyl Techniflex Hose

3.



Wall Outlet Elbow

4.



Hand Shower  
Alternate Wall Mount

5.



Fine Brushed Stainless Steel  
Concealed Flange Grab Bars

6.



Ergonomic Hand Shower  
Holder ABS Chrome

7.



HG Focus E  
Pressure Balance Valve

8.



Interchangeable iBox  
Universal Plus for HG Focus E

9.



Four Legged Foldup Seat  
(500 lbs. Weight Capacity)

10.



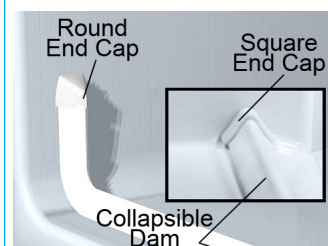
Rectangular Stainless Steel  
Soap-Sponge Basket

11.



Fine Brushed Stainless  
Steel Curtain Rod

12.



Collapsible Rubber Dam  
White PVC with End Caps

13.



2" Chrome Strainer  
Brass Drain with Friction Seal

14.



66" x 74" Heavy Weighted  
Shower Curtain

**hansgrohe**

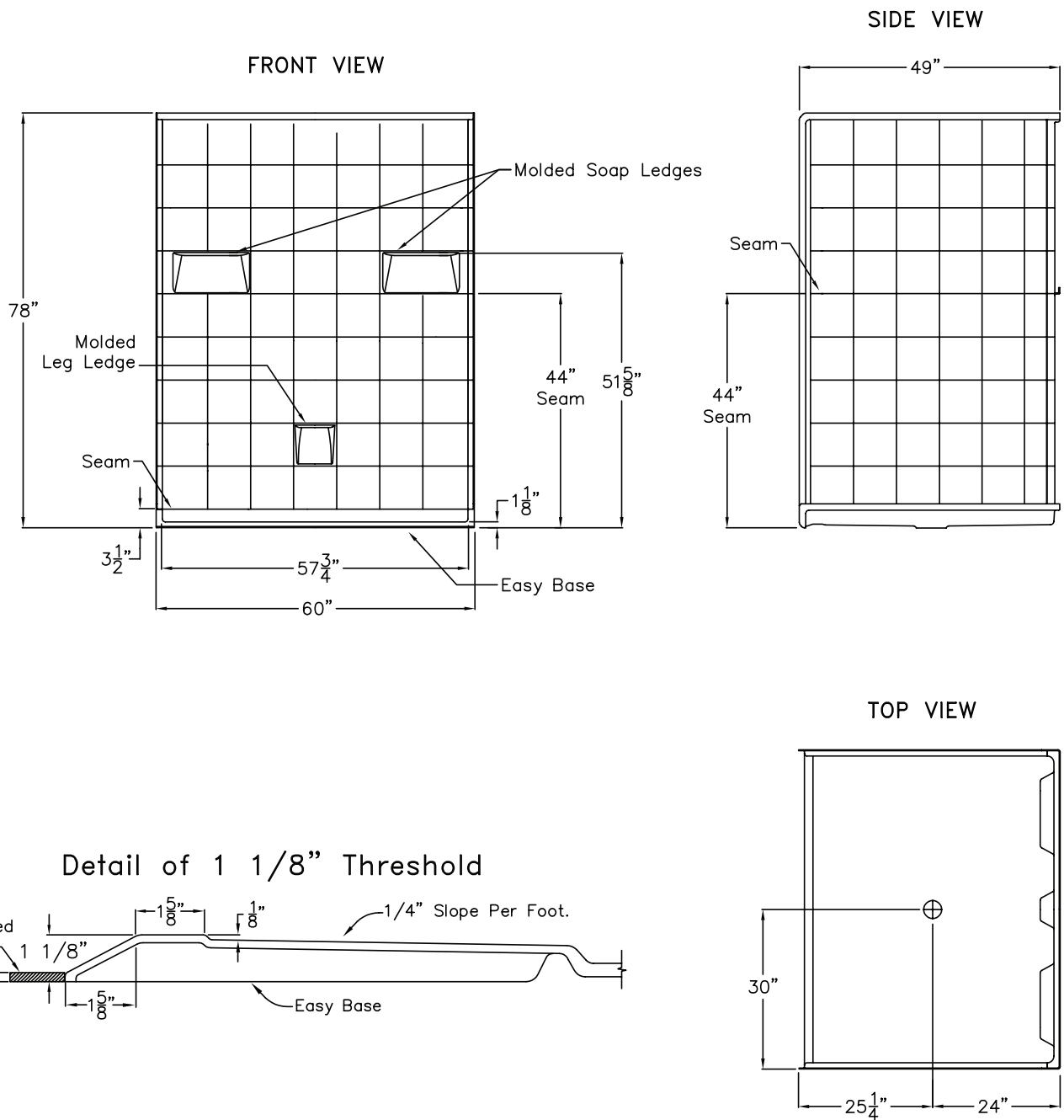
1, 2, 3, 4, 7, 8  
German Engineering

**PONTE GIULIO**  
creating solutions

6, 10  
Italian Design

# Barrier Free, Roll In Shower 60" x 48"

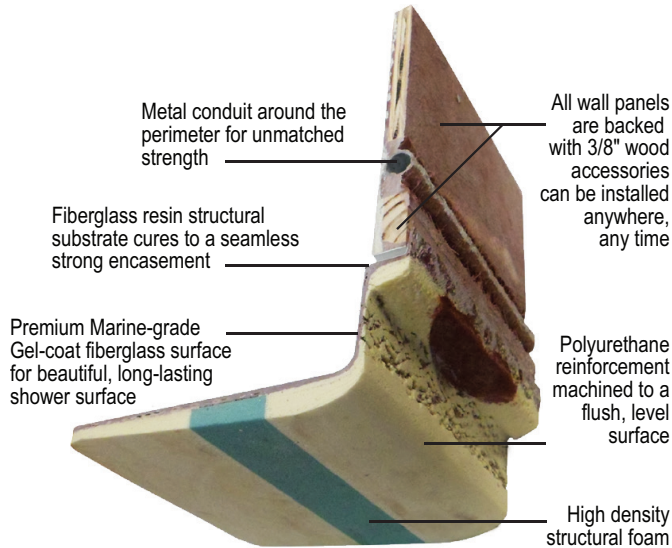
## 6048 BF 5P 1.125 - Center Drain



# Barrier Free, Roll In Shower Features

## STRENGTH

Wood & Steel Reinforced Walls



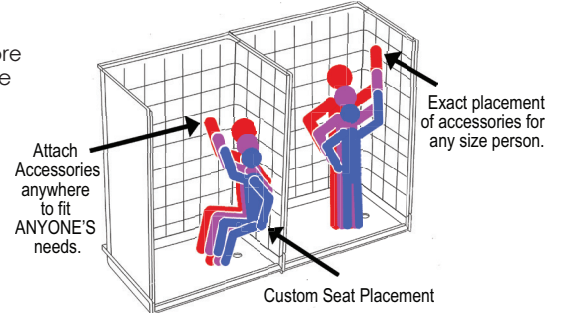
Twice the weight and twice the raw materials used in the construction of our showers than listed by any of our competitors.

Wood reinforced core walls and high density base. Metal conduit around perimeter of EACH panel for added strength.

## ADAPTABILITY

Customized Accessory Placement

The wood reinforced core walls allow the fixtures to be installed right onto the wall studs by eliminating the need for a drywall backing.



## SHOWER DOOR FRIENDLY

Your choice: Curtain or Door

Square corners in Ella shower construction allow for framed or frameless shower doors to be installed.

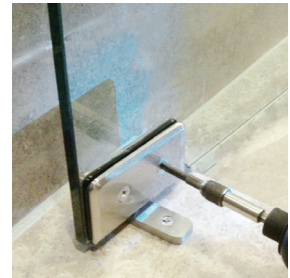
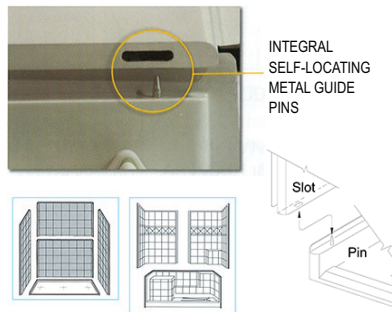


Image for illustration only

## FRONT SIDE INSTALLATION

Aluminum Pin and Slot System for a contractor friendly front side installation.

An installation may be finished in a fraction of the time. No more need to get behind the panels to bolt large panels together.



## AVAILABILITY

Your Project won't be held up

Ella showers are manufactured, inspected and shipped directly from the factory within 5 - 7 business days.

Rush orders are available upon request (white only).

No order is too big or small.

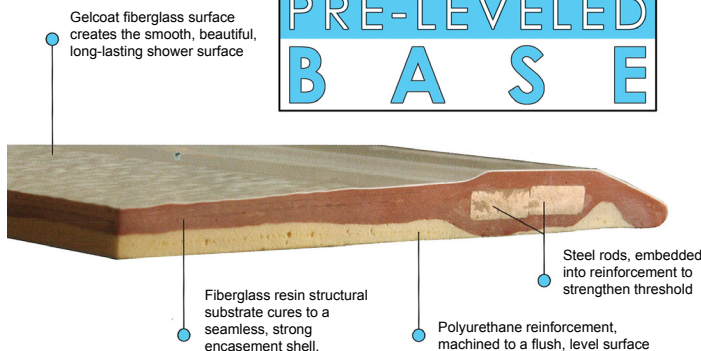
### SMART PACKING

Multi-piece Shower in a Box



In stock for Rapid Ship

## PRE-LEVELED BASE



## Barrier Free 7/8"

