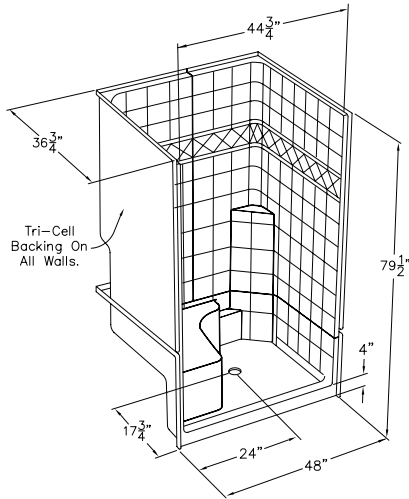


Low Threshold Shower 48" x 36" **Ella Plus 24 LT** - Left or Right Seat



Model

3648 SH 1S 3P 4.0 L-WH 24LT	3648 SH 1S 3P 4.0 R-WH 24LT
3648 SH 1S 3P 4.0 L-BN 24LT	3648 SH 1S 3P 4.0 R-BN 24LT
3648 SH 1S 3P 4.0 L-B 24LT	3648 SH 1S 3P 4.0 R-B 24LT

Ella Plus 24 LT Accessories (below):

Hansgrohe & Ponte Giulio are optional

hansgrohe

German Engineering



Italian Design

Outside Dimensions: 48" W x 37" L x 79.5" H
Seat Dimensions: 22" W x 18.5" L x 21" H
Shipping Dimensions: 60" W x 48" L x 72" H
Shipping Weight: 183 lbs.
Net Weight: 170 lbs.
Threshold Height: 4"

Package Options:

- White (W), Bone (BN) or Biscuit (B) Shower Panels
- Standard, Plus 24, Plus 36, Freedom, or Prestige
- Flange Trim Molding Kit
- Multi-Piece Window Trim Kit

Panels:

Shower Base 48" W x 37" L x 22.5" H
Side Wall Panel Left 24" W x 37" L x 57" H
Side Wall Panel Right..... 24" W x 37" L x 57" H

Features:

- Premium marine grade gel-coat, three piece shower with 6" classic tile pattern design and diamond accent
- Wood reinforced walls for placing grab bars and seats anywhere (not dependent on stud locations)
- Easy shower wall assembly pin-lock system allowing front side installation
- Precision fit wall panel seams (match into grout pattern)
- Grip-Sure™ floor texture
- Self supporting, pre-leveled shower base (no mudset required)
- Shower door friendly (squared corners allow door installations)
- Ships pre-assembled, heavy duty crating protects product in transit

Accessories:

- Three (3) 24" Fine Finished Stainless Steel Grab Bars
- 2" Chrome strainer brass drain with friction seal



Fine Brushed Stainless Steel
Concealed Flange Grab Bars



2" Chrome Strainer
Brass Drain with Friction Seal

Codes:

IPC, UPC, ANSI Z 124.2, NAHB, HUD, FHA

Warranty:

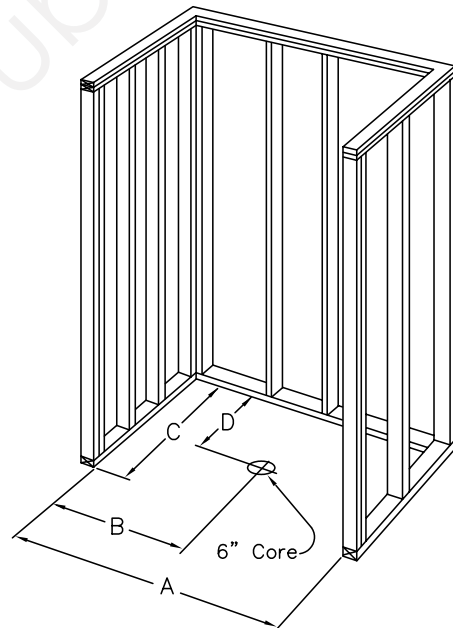
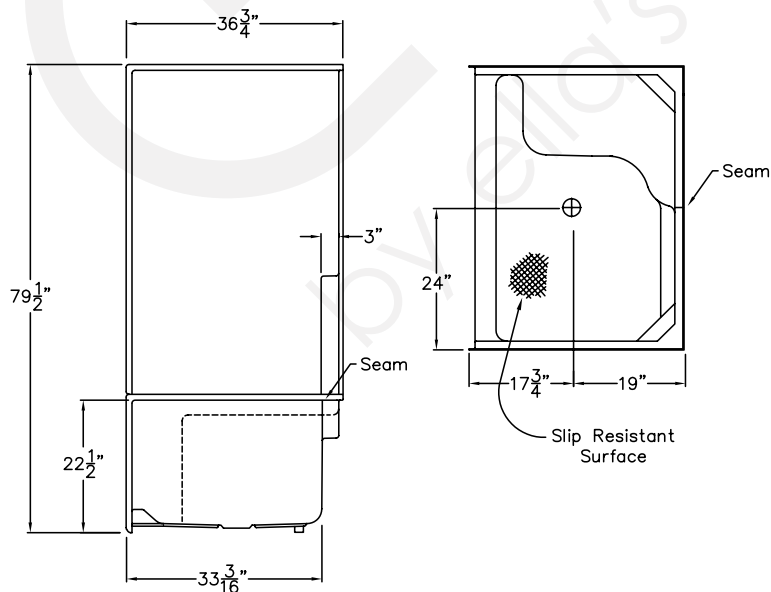
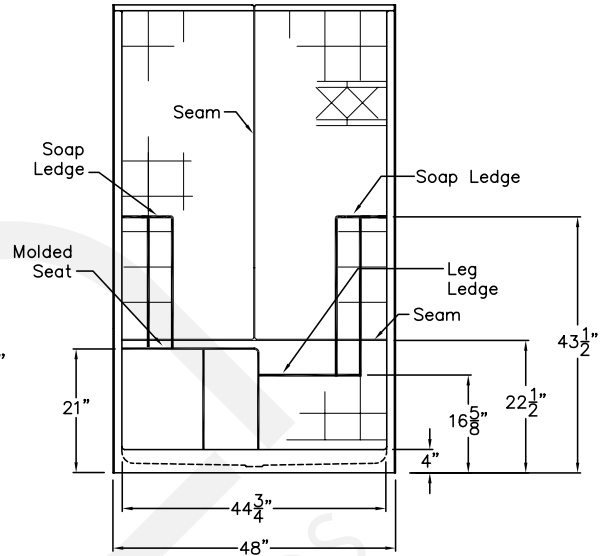
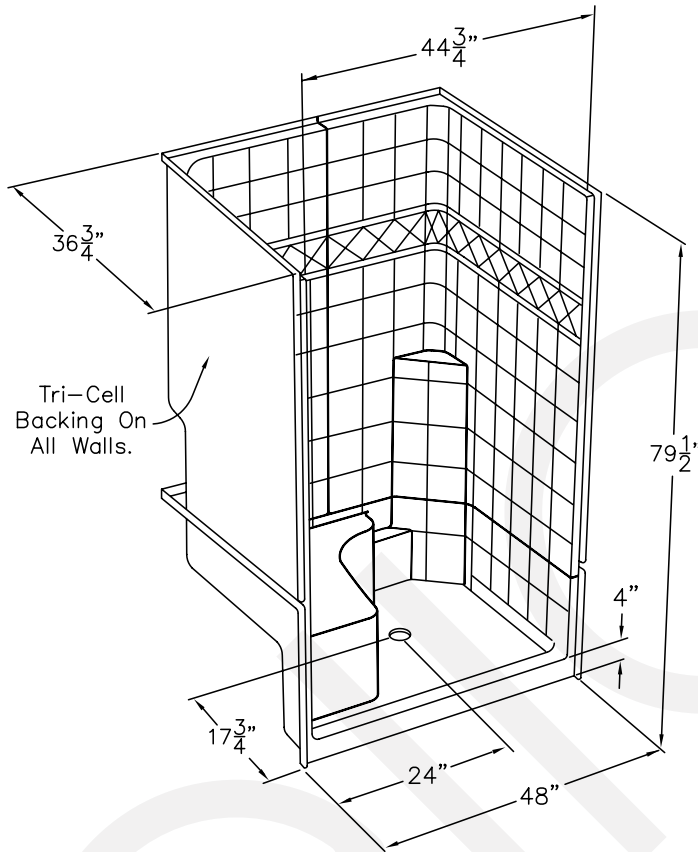
30 Year Limited Lifetime Warranty (on shower panels)*

*For more information please visit www.ellasbubbles.com

Low Threshold Shower 48" x 36"

4836 SH 1S 3P 4.0 - Left or Right Seat

**Left Seat Shown*



A	B	C	D
48 1/4"	24 1/8"	36 3/4"	19"

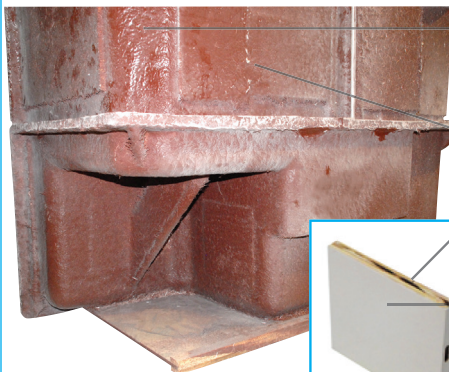
Disclaimer:

In an effort to continually improve our product, specifications and configurations are subject to change without notice. Before ordering or installing, consider future access to essential equipment. Due to the nature of the materials, dimensions may vary $\pm 1/2"$.

Low Threshold Shower Features

STRENGTH

Wood & Steel Reinforced Walls



Fiberglass resin structural substrate cures to a seamless strong encasement.

All panels are backed with 3/8" wood, accessories can be installed anywhere.

Premium Marine-grade Gel-coat fiberglass surface for beautiful, long-lasting shower surface.

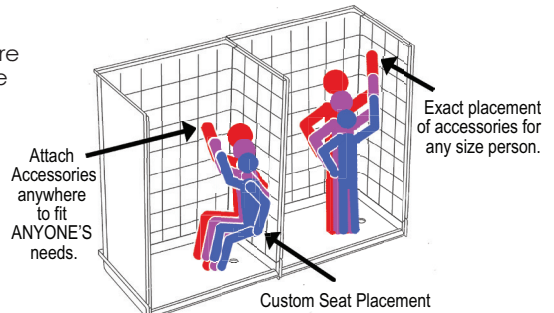
Twice the weight and twice the raw materials used in the construction of our showers than listed by any of our competitors.

Wood reinforced core walls and high density base.

ADAPTABILITY

Customized Accessory Placement

The wood reinforced core walls allow the fixtures to be installed right onto the wall studs by eliminating the need for a drywall backing.



SHOWER DOOR FRIENDLY

Your choice: Curtain or Door

Square corners in Ella shower construction allow for framed or frameless shower doors to be installed.



Image for illustration only

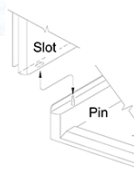
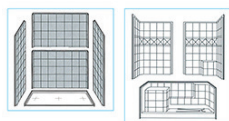
FRONT SIDE INSTALLATION

Aluminum Pin and Slot System for a contractor friendly front side installation.

An installation may be finished in a fraction of the time. No more need to get behind the panels to bolt large panels together.



INTEGRAL SELF-LOCATING METAL GUIDE PINS



AVAILABILITY

Your Project won't be held up

Ella showers are manufactured, inspected and shipped directly from the factory within 5 - 7 business days.

Rush orders are available upon request (white only).

No order is too big or small.

SMART PACKING



In stock for Rapid Ship

4" LOW THRESHOLD DETAILS

Gelcoat fiberglass surface creates the smooth, beautiful, long-lasting shower surface

Polyurethane reinforcement, machined to a flush, level surface

Fiberglass resin structure substrate cures to a strong, seamless encasement shell

