

Technical Specification

Specification

Size: 31.7/8" x 59.1/2"

Standard Features

*Designed for tub replacements.

Material: Cultured Marble
Color: White
Finish: Gloss

*2" freshold on each side.

*Solid one-piece construction.

*Pre leveled, rests on subfloor.

*Mold and mildew resistant.

*"Grout free" and non-porous.

*Stain resistan and easy to clean

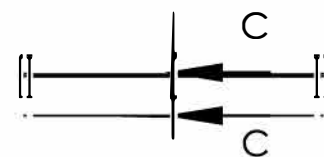
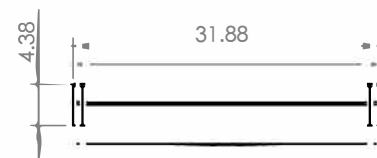
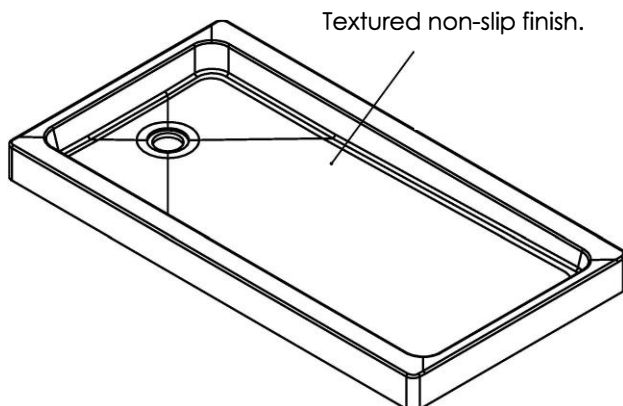
*Waterproof and leakproof.

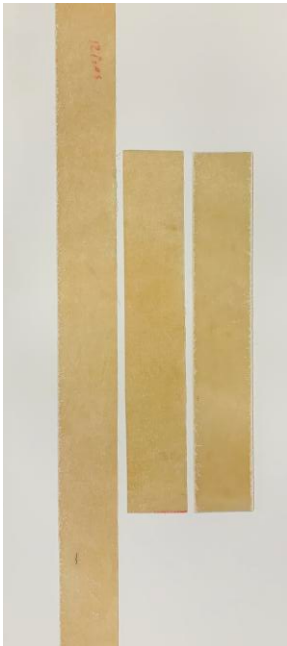
*Drain Opening:

- 15.15/16" From side of pan

- 8" From backwall

Shower base does not have a molded tile flange. 3 fiberglass tile flanges included must be installed with 100% silicone and screws to the side of the base after installation position of the base is established.

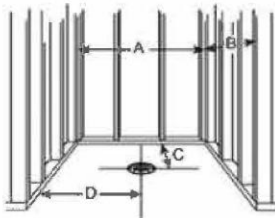




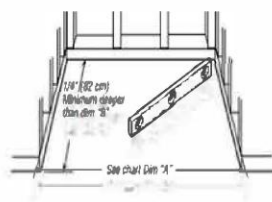
Note: If you have purchased reversible shower base please attach/ glue the 4" fiberglass tile flanges with 100% silicone before the shower base installation. The shower panels will be installed over the tile flanges and siliconed to protect from leakages behind the base.

Important: Read these instruction before starting installation

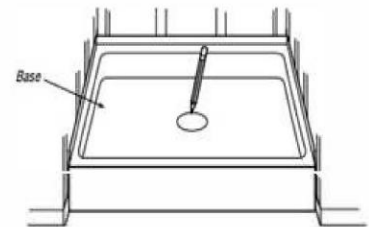
■ Prepare walls, floor and base.



1. Frame alcove noting your base dimensions.

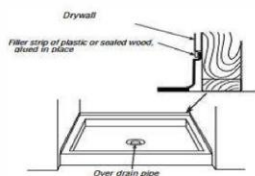


2. Position base and trace drain location.

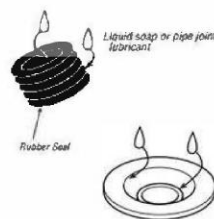


3. Cut drain access a install drain pipe.

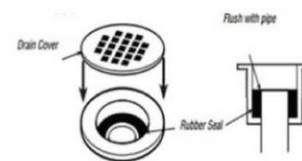
■ Install shower base.



4. Install drywall and filler strip



5. Lubricate rubber seal, pipe & drain and insert tap down until flush with drain pipe



6. Check that seal is flush with pipe and instal drain cover